



Clark College

Board of Trustees Regular Meeting Packet

Wednesday, November 12, 2025, at 5:00 p.m.

Location: Gaiser Hall, Room 213

Virtual Option:

[Zoom Link](#)

Meeting ID: 835 5861 8811

Passcode: 432808

Dial in: (253) 215-8782

Board of Trustees Regular Meeting Packet, November 12, 2025, at 5:00 pm

- I. Call to Order/Agenda Review – Chair Scarbrough
- II. Public Comment – Chair Scarbrough
Public comment will be limited to two minutes per speaker. Speakers must sign up by 4:55 PM on the day of the Board meeting. [Signup Link](#)
- III. Action Items/Consent Agenda – Chair Scarbrough
 - a. October 15, 2025 - Work Session Minutes
 - b. October 15, 2025 - Regular Meeting Minutes
 - c. Approval of Board Policies Reaffirmed without Changes
 - i. 100.A10 Legal Status and Authority of the Board
 - ii. 100.A20 Official Name of District
 - iii. 100.A30 Official College Title
 - iv. 100.A40 Official Board Title
 - v. 100.A50 District Seal
 - vi. 100.A60 Physical Boundaries of the District
- IV. Constituent Reports
 - a. Associated Students of Clark College (ASCC)
Presented by Alijah Machida, ASCC President
 - b. Washington Public Employees Association (WPEA)
Presented by Jenny Shadley, WPEA Member Leader
 - c. Clark College Association of Higher Education (CCAHE)
Written report not received.
- V. Student Speaker: Noelle Cummins, Welding Student
- VI. Reports from Board Members – Chair Scarbrough
- VII. President’s Report – Dr. Karin Edwards
- VIII. Public Hearing (Rule Making)
 1. WAC 132N-126-010 (amend)
 2. WAC 132N-126-015 (amend)
 3. WAC 132N-126-025 (amend)
 4. WAC 132N-126-036 (adopt)
- IX. Next Meeting
The next Board of Trustees work session and regular meeting are scheduled for Wednesday, December 3, starting at 3:30 pm.
- X. Adjournment – Chair Scarbrough

Clark College

Board of Trustees Work Session Minutes

Wednesday, October 15, at 3:30 pm

PUB 258-C and Zoom

In Attendance

Marilee Scarbrough, Chair

Suzanne Donaldson, Vice Chair

Cristhian Canseco Juarez, Trustee

Denise Gideon, Trustee

Administrators

Dr. Terry Brown, Vice President of Instruction

Sudha Frederick, Vice President of Information Technology

Vanessa Neal, Vice President of Diversity, Equity, and Inclusion

Calen Ouellette, Clark College Foundation Chief Executive Officer

Dr. Darcy Rourk, Interim Vice President of Human Resources

Sabra Sand, Vice President of Operations

Dr. Mark Wahlers, Interim Vice President of Student Affairs

Absent

Jeanne Bennett, Trustee

Dr. Karin Edwards, President

Other

Shelley Williams, Assistant Attorney General

Call to Order/Agenda Review

Chair Scarbrough called the work session to order at 3:30 p.m.

Public Comment

No public comment.

Fall Student Profile and Community Impact

Dr. Cecilia Martin, Associate Vice President of Planning and Effectiveness, and Dr. Mark Wahlers, Interim Vice President of Student Affairs, presented a high-level overview of fall enrollment. Enrollment increased 18 percent since 2021 and 0.5 percent from last fall, exceeding the college's budget target. Demographic highlights included 37 percent of students of color, 39 percent age 25 and older, and 47.7 percent of first-generation college students. They discussed retention, enrollment growth, and average credit load.

Dr. Wahlers also shared updates on Running Start expansion, Disability Access Center support for 504 students, 191 student athletes, and 225 veterans.

College Reorganization

Dr. Darcy Rourk, Interim Vice President of Human Resources, and Vanessa Neal, Vice President of Diversity, Equity, and Inclusion, outlined the college's proposal to merge Human Resources and ODEI into a unified Office of People and Culture. They shared that feedback has been gathered from impacted departments and the college community. The presentation provided an opportunity for the Board to learn more about the proposal and ask questions about the process and next steps.

Adjournment

Chair Scarbrough adjourned the work session at 4:35 p.m.

Clark College

Board of Trustees Regular Meeting Minutes

Wednesday, October 15, 2025

GHL 213 and Zoom

In Attendance

Marilee Scarbrough, Chair

Suzanne Donaldson, Vice Chair

Cristhian Canseco Juarez, Trustee

Denise Gideon, Trustee

Administrators

Dr. Terry Brown, Vice President of Instruction

Sudha Frederick, Vice President of Information Technology

Vanessa Neal, Vice President of Diversity, Equity, and Inclusion

Calen Ouellette, Clark College Foundation Chief Executive Officer

Dr. Darcy Rourk, Interim Vice President of Human Resources

Sabra Sand, Vice President of Operations

Dr. Mark Wahlers, Interim Vice President of Student Affairs

Absent

Jeanne Bennett, Trustee

Dr. Karin Edwards, President

Other

Shelley Williams, Assistant Attorney General

Call to Order/Agenda Review

Chair Scarbrough called the regular Board of Trustees meeting to order at 5:00 p.m.

Public Comment

No public comment

Action Items/Consent Agenda

- i. September 24, 2025 - Work Session Meeting Minutes
- ii. September 24, 2025 - Regular Meeting Minutes

MOTION: Trustee Canseco Juarez moved to approve the Consent Agenda. Trustee Donaldson seconded the motion. During the discussion, it was noted that the Board of Trustees Officer and Committees, bullet point G. Board Budget Commitment, would be updated to Board Budget Committee. The motion carried.

Constituent Reports

Associated Students of Clark College (ASCC)

Alijah Machida, ASCC President, reported that the ASCC Student Government focused on building an inclusive and engaged campus community. Highlights included Welcome Week, the Student Involvement Fair with more than 300 attendees, and the chartering of four new clubs. ASCC social media reached over 63,000 views, and the Penguin Pantry distributed nearly 13,000 pounds of food to 355 students. He noted ongoing efforts to streamline the club chartering process and develop instructional videos to support student involvement.

Washington Public Employees Association (WPEA)

No written or oral report.

Clark College Association of Higher Education (CCAHE)

No written or oral report.

Entry Services

Vanessa Watkins, Director of Entry Services, presented the department's recruitment, onboarding, and orientation efforts. Entry Services hosted 192 recruitment and outreach events during 2024–2025, connecting with more than 2,000 prospective students through high school visits, community events, and workshops. Highlights included Running Start Information Nights, Discovering College Confidence for BIPOC students, and the CTE Showcase. Through the Gates Foundation Horizons Grant, the college expanded outreach to 13 rural school districts in partnership with ESD 112, Lower Columbia College, and WSU Vancouver. She noted collaboration with faculty and campus partners through the Recruitment Task Force to coordinate outreach efforts. Staff conducted 912 one-on-one onboarding appointments, assisted 6,469 visitors through the One Stop, and supported 8,347 students who completed the virtual orientation. Student Ambassadors provided vital peer leadership, leading 203 campus tours and hosting 33 group visits serving more than 1,800 participants.

Reports from the Board Members

Trustee Canseco Juarez

Trustee Canseco Juarez recognized Clark College's 92nd anniversary. He thanked faculty and staff for their engagement in preparation for the upcoming accreditation visit and acknowledged Dr. Cecilia Martin for her leadership in coordinating the process. He emphasized the importance of continuing to meet students where they are and highlighted the college's ongoing commitment to intentional community engagement. He also reflected on the value of national conferences in exchanging ideas.

Trustee Gideon

Trustee Gideon reported meeting with Dr. Edwards for her 1:1 and expressed confidence in the college's preparation for the upcoming accreditation visit.

Vice Chair Donaldson

Vice Chair Donaldson reported attending Trustee Tuesday. She also met with Chair Scarbrough for her 1:1 and expressed gratitude for the accreditation materials provided to help prepare for the upcoming visit.

Chair Scarbrough

Chair Scarbrough reported attending the Foundation Board meeting and expressed appreciation for the strong partnership between the Foundation and the college in supporting students and staff. She highlighted the Foundation's new "Mission Minute" feature, which shares stories of student success. Chair Scarbrough noted professional development opportunities at next week's national conference. She also thanked Dr. Wahlers for his exemplary service to the college, the Board, and students.

Report from the President

Dr. Edwards reported that the college will host its seven-year accreditation site visit next week and thanked Dr. Cecilia Martin and the committee for their preparation. Fall enrollment increased to 9,500 students, with Direct Transfer, ESL, and Pre-Nursing as the top programs. She noted the new SBCTC budget model begins in fall 2026 with an estimated \$4 million reduction for Clark and provided an update on federal and state grants. Dr. Edwards announced plans to establish an Office of People and Culture to strengthen employee engagement, thanked staff for hosting the WACTC meeting, and acknowledged Dr. Mark Wahlers for his leadership as Interim Vice President of Student Affairs.

Next Meeting

The next Board of Trustees work session and regular meeting are scheduled for Wednesday, November 12, starting at 2:30 pm.

Adjournment

Chair Scarbrough adjourned the regular meeting at 5:39 p.m.

100.00 Board of Trustees

100.A00 Legal Status of the Board

100.A10 Legal Status and Authority of the Board

By authority contained in the Community and Technical College Act of 1991 and as appointed by the Governor and the State of Washington, the Clark College Board of Trustees shall serve the educational needs of Community College District 14 and shall be responsible for developing the policies of Community College District 14 under which Clark college operates. The Board of Trustees derives its authority from RCW 28B.50.140, as now written or later amended. The Board will delegate certain responsibilities to the president or designee. Individual members of the Board have power and authority only when acting formally as members of the Board in session at regular or special meetings.

100.A20 Official Name of District

The official name of the District, established under and by virtue of the laws of the State of Washington, shall be "Community College District 14". Within the Board Policies and Administrative Procedures Manual, the terms "District" and "College" both refer to Clark College or Community College District 14.

100.A30 Official College Title

The official name of the College shall be "Clark College". The College name shall be used in all instances except where the statutory name of the District is legally required, e.g., in publication of legal notices and in the execution of contracts and other legal documents.

100.A40 Official Board Title

The Board of Trustees shall be known as the "Board of Trustees of Clark College" (herein referred to as the "Board").

100.A50 District Seal

The District shall have a seal, the form and design of which shall be adopted by the Board and the custody of which shall be with the secretary of the Board. The seal shall have inscribed upon it the name of the college as shown.

100.A60 Physical Boundaries of the District

The fourteenth (14) district shall encompass the counties of Clark, Skamania, and that portion of Klickitat County not included in the sixteenth district as defined by RCW 28B.50.040.



Clark College ASCC Board of Trustees Report November 2025

Presented by: ASCC President Alijah Machida

Student Involvement & Campus Climate

The ASCC Student Government remains deeply committed to fostering a campus culture where every student feels engaged, supported, and valued. We recognize that inclusive environments contribute directly to student success and well-being. ASCC will continue to support existing initiatives while innovating new opportunities for students to connect, participate, and feel a sense of belonging.

Activities to support this priority:

- Pumpkin Painting, 10/29
 - Hosted in the Hanna Hall Lobby, this event invited students to participate in pumpkin painting and enjoy a free drink from the Hanna Hall Coffee Lounge. Any student dressed up in a costume received a \$20 gift card to the Clark College Bookstore.
- Club Information
 - 9 Chartered Clubs
 - 5 In Process
 - 14 Club and Program Events Serving 656 Students
- Social Media, 10/5 - 11/3
 - +82K Views
 - 508 Interactions
 - 79 New Followers
- Collaboration Committee
 - Led by the ASCC President and assembled this quarter to bring together student leaders from across campus once a month for discussion, coordination, and collective problem-solving. The committee serves as a platform for shared leadership and student advocacy.
 - Members include representatives from: ASCC President, ASCC Executive Assistant, Activities Programming Board (APB), Student Ambassadors, Math, Engineering, and Science Achievement (MESA) Ambassadors, Office of

Diversity, Equity, and Inclusion (ODEI) Peer Mentors, and Phi Theta Kappa (PTK).

- Phi Theta Kappa (PTK)
 - Phi Theta Kappa had a successful College Project, hosting a fall welcome-back event where they gave out 63 backpacks filled with school supplies and information on student resources, including Student Success Coaches and the Penguin Pantry.

Student Resource Access

The ASCC Student Government is dedicated to ensuring that all Clark College students have equitable access to the resources they need to succeed academically, professionally, and personally. Through strategic advocacy and outreach, ASCC will work to enhance the visibility, accessibility, and effectiveness of student support services across campus.

Activities to support this priority:

- College 101 Visits, 11/3 - 11/7
 - ASCC and APB visited College 101 classes to provide presentations about ways students can get involved on campus. These presentations increased awareness of ASCC programs, student clubs, and leadership opportunities as well as events hosted by APB.
- Penguin Pantry
 - Total Pounds: 19,218
 - Unduplicated students: 533
 - Total Household members: 2,078
 - Total Visits: 509

Clark College State-Wide Initiatives

The ASCC Student Government understands the significance of partnering with groups such as College Administration, Board of Trustees and state-wide groups to develop outreach and advocate for funding in the interests of Clark College students at the state level. Additionally, the ASCC Student Government recognizes the benefits of partnering with nearby colleges to increase community involvement and student engagement.

Activities to support this priority:

- Accreditation, 10/21
 - ASCC representatives participated in a student leaders focus group by sharing experiences and providing insight into the college's strengths and areas for improvement. Students highlighted how their work connects to Clark College's mission and contributes to student learning and success, giving evaluators a

comprehensive understanding of student engagement and leadership initiatives on campus.

WPEA/UFCW Local 365, Clark College Unit

Board Report for November 2025

MEETINGS

WPEA Stewards meet weekly. No upcoming member meetings are scheduled at this time.

COMMUNICATION

Current contact for campus stewards: wpeastewards@clark.edu

Representational Stewards

Angela Dawson

Becky Lindsay

Courtney Braddock

Jillian Taylor-Valdez

Stephanie Hall

Member Leaders

Jenny Shadley

Ryan Johnson

WPEA Member Representation Specialist

Judy Lumm judy@wpea.org

WPEA Updates:

Welcome Judy

The WPEA recently made some staffing changes which resulted in a new staff rep. being assigned to cover Clark College. Judy Lumm is now the WPEA Member Representation Specialist for Clark College and she can be reached at judy@wpea.org.

Judy has a total of 20 years of labor experience and has been working with WPEA for nearly three years. She also represents members at Tacoma Community College, Grays Harbor College, and Yakima Valley College. Judy encourages open dialogue with management, administrators, and human resources staff. She believes strongly in cultivating a collaborative working relationship between unions and employers to ensure the best outcomes for all staff,

students, and community members. Judy's not just a resource for union members, so please feel free to contact Judy Lumm at any time.

Benefits Fair

Last week, WPEA was thrilled to participate in the campus Benefits Fair where we shared information about our Financial Hardship Fund, Union Plus discounts and the many other perks of being a WPEA union member. Not only was it a great chance to talk to staff, but we were also able to educate community members about the valuable roles our union members play on campus in their classified positions. We'd like to thank the college for including us and we look forward to returning to the fair next year.

Contract Funding

We ask that the Board of Trustees and Executive Cabinet encourage the State Legislature to fund the ratified WPEA Union Contract which would benefit approximately 4,500 classified staff employees throughout the state.

Effects of Federal Shutdown on Clark Employees

While all of us at Clark are doing what we can to support students and provide resources to them during these difficult economic times, many classified employees are also financially struggling. WPEA Shop Stewards are working with their union staff to develop even more resources for Clark College staff in need. As we continue to work on making resources available, we'll update the Board to help us get the word out.

Clark College Welding program

Presentation by Noelle
Cummins



About me:

- 2nd year student in welding program
- Attended clark for 4 years
- Began welding program as a 2nd year biology student looking for something new



Processes Learned by students

The program requires students to learn multiple processes, such as;

- Flux core arc welding
- Gas metal arc welding
- Gas Tungsten Arc Welding
- Shielded metal arc welding
- Carbon Arc Cutting
- Plasma arc cutting
- Oxy-fuel cutting

These all includes understanding electrical parameters, auxiliary controls, and manual and semi-manual welding processes.

Operation of Machinery

Students learn to operate:

- Accurshear
- Iron worker
- Bandsaw
- CNC Plasma Table

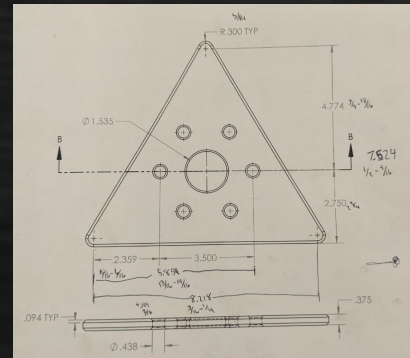
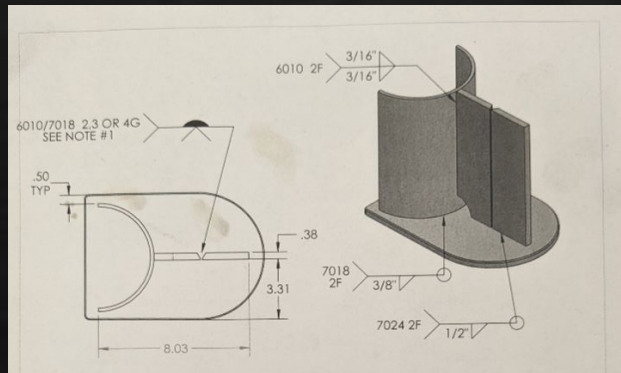
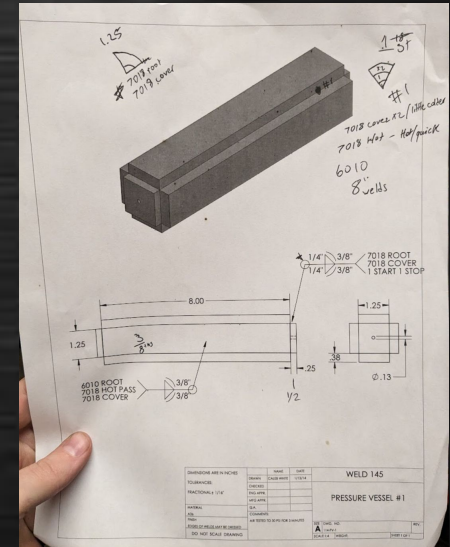
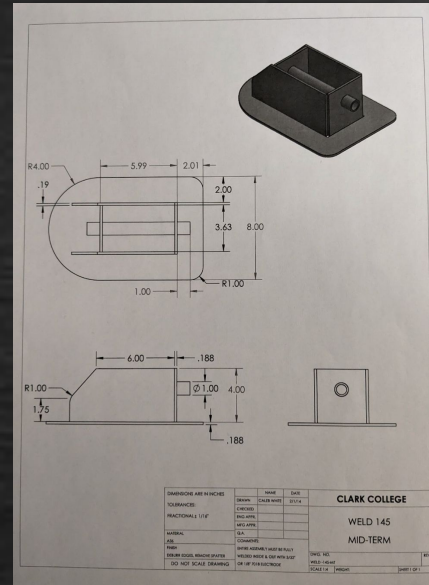
This includes learning:

- General safety
- Coordination with others
- Monitoring machine performance



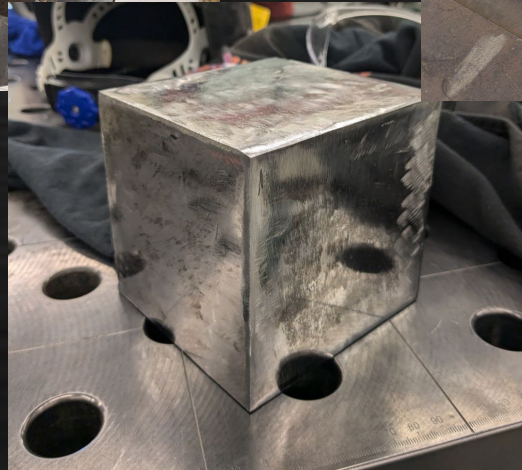
Fabrication/welding projects

- The program includes many different welding and fabricating tasks to be completed
- Students learn how to read blueprints and follow directions to finish projects both simple and complex



Independent fabrication projects

- C-clamps
- Adjustable Chairs
- pressure vessels
- Troughs
- Cube



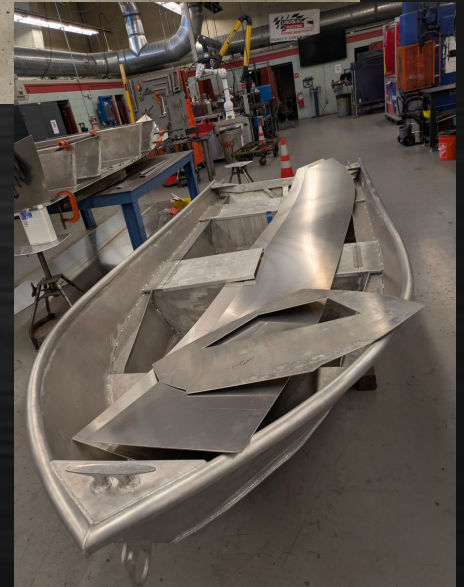
Group fabrication projects

Group fabrication projects include:

- Aluminum boat
- Large pressure vessel

These projects entail:

- Precise fabrication and welding
- Reading and creating blueprints
- Solving complex calculations
- Participating in group management
- Engaging in teamwork



Thank you

A special thanks to my instructors Brian, Wade, Chad, and other shop technicians at Clark

Adoption of Amendments to
WAC 132N-126 – Student Code
of Conduct (*Sam’s Law – Hazing
Prevention Compliance*)





Purpose of Board Action

- Approve amendments to WAC 132N-126-010, -015, -025 and adopt WAC 132N-126-036.
- These updates bring Clark College into compliance with “Sam’s Law” (2SHB 1751, 2022).
- Law requires colleges to:
 - Prohibit hazing both on and off campus.
 - Update hazing definitions and reporting requirements.
- Board approval authorizes filing the CR-103 Rule Adoption with the State Register.

Background: What is Sam's Law?

- Passed in 2022 after the death of Sam Martinez at WSU.
- Amends RCW 28B.10.900 and adds RCW 28B.10.904.
- Requires all higher-education institutions to:
 - Adopt clear anti-hazing rules.
 - Provide annual hazing prevention training.
 - Publicly disclose disciplinary findings against student groups for hazing.

Affected WAC Sections

Action	Section	Title
 Amend	WAC 132N-126-010	Definitions – adds “hazing,” “student group,” and clarifies “student.”
 Amend	WAC 132N-126-015	Jurisdiction – covers on/off-campus hazing.
 Amend	WAC 132N-126-025	Prohibited Conduct – expands hazing, cyber-misconduct, and safety provisions.
 Adopt	WAC 132N-126-036	Hazing Prohibited – establishes sanctions, reporting, and state penalties.

Key Changes in the Code

- Expanded Hazing Definition
 - Includes initiation, recruitment, or affiliation acts causing physical or psychological harm; consent is not a defense.
- Applies Both On and Off Campus — jurisdiction clarified.
- New Sanctions Section (WAC 132N-126-036):
 - Hazing is a misdemeanor offense under state law.
 - Student groups permitting hazing lose official recognition.
 - Individuals forfeit state-funded scholarships or grants for a time period determined by the college.
 - Findings must be publicly reported.
- Definitions Updated for “student,” “student group,” and “college premises.”

Why Board Approval Matters

- Trustees must adopt these amendments to ensure Clark College complies with state law and RCW 28B.10.904.
- Adoption prevents exposure to state penalties and maintains eligibility for state funding.
- Demonstrates Clark College's commitment to student safety, accountability, and transparency.

Timeline and Next Steps

Date

Oct 1 2025

Nov 12 2025

Nov 12 2025

Late Nov 2025

Effective Date

Step

CR-102 filed – proposed rulemaking notice.

Public hearing (Ellis Dunn Room / Zoom).

Board Review and Consideration

CR-103 filed – final adoption in Washington State Register.

31 days after filing of CR-103.

Board Action Requested

Recommendation:

That the Board of Trustees approve amendments to WAC 132N-126-010, -015, and -025 and adopt WAC 132N-126-036, bringing Clark College's *Student Code of Conduct* into compliance with *Sam's Law* (2SHB 1751, 2022).

WAC 132N-126-010 Definitions. The following definitions shall apply for the purposes of this student conduct code:

(1) "ASCC" means the associated students of Clark College as defined in the constitution of that body.

(2) "Assembly" means any overt activity engaged in by one or more persons, the object of which is to gain publicity, advocate a view, petition for a cause, or disseminate information to any person, persons, or group of persons.

(3) "Business day" means a weekday, excluding weekends and college holidays.

(4) "College" means Clark College and any other community college centers or premises established within Community College District No. 14, state of Washington.

(5) "College community" means trustees, students, staff, faculty, and visitors on college premises.

(6) "College official" includes any person employed by the college performing assigned duties.

(7) "College premises" includes all campuses and electronic presences of the college, wherever located, and includes all land, buildings, facilities, vehicles, equipment, computer systems, websites, and other property owned, used, or controlled by the college.

(8) A "complainant" is an alleged victim of sexual misconduct.

(9) "Conduct review officer" is the vice president of student affairs or other college administrator designated by the president to be responsible for receiving and for reviewing or referring appeals of student disciplinary actions in accordance with the procedures of this code.

(10) "Controlled substance" means and includes any drug or substance as defined in chapter 69.50 RCW as now law or hereafter amended.

(11) "Day" means a weekday, excluding weekends and college holidays.

(12) "Disciplinary action" is the process by which the student conduct officer imposes discipline against a student for a violation of the student conduct code.

(13) "Disciplinary appeal" is the process by which an aggrieved student can appeal the discipline imposed by the student conduct officer. Disciplinary appeals from a suspension in excess of (~~ten~~) 10 instructional days or an expulsion are heard by the student conduct committee. Appeals of all other appealable disciplinary action shall be reviewed through brief adjudicative proceedings.

(14) "Faculty member" and "instructor" means any employee of Community College District No. 14, state of Washington, who is employed on a full-time or part-time basis as a teacher, instructor, counselor, or librarian.

(15) "Filing" is the process by which a document is officially delivered to a college official responsible for facilitating a disciplinary review. Unless otherwise provided, filing shall be accomplished by:

(a) Hand delivery of the document to the specified college official or college official's assistant; or

(b) By sending the document by email and first class mail to the specified college official's office and college email address.

Papers required to be filed shall be deemed filed upon actual receipt during office hours at the office of the specified college official.

(16) "The president" is the president of the college. The president is authorized to:

(a) Delegate any of their responsibilities as set forth in this chapter as may be reasonably necessary; and

(b) Reassign any and all duties and responsibilities as set forth in this chapter as may be reasonably necessary.

(17) "RCW" means Revised Code of Washington which can be accessed at <http://apps.leg.wa.gov/rcw/>.

(18) "Respondent" is the student against whom disciplinary action is initiated.

(19) "Service" is the process by which a document is officially delivered to a party. Unless otherwise provided, service upon a party shall be accomplished by:

(a) Hand delivery of the document to the party; or

(b) By sending the document by email and by certified mail or first class mail to the party's last known address.

Service is deemed complete upon hand delivery of the document or upon the date the document is emailed and deposited in the mail.

(20) "Sexual misconduct" has the meaning ascribed to this term in WAC 132N-126-025(13).

(21) "Student" includes all persons taking courses at or through the college, whether on a full-time or part-time basis, and whether such courses are credit courses, noncredit courses, online courses, or otherwise. Persons who withdraw after allegedly violating the code, who are not officially enrolled for a particular term but who have a continuing relationship with the college, or who have been notified of their acceptance for admission are considered "students" for purposes of this chapter.

(22) "Student conduct officer" is a college administrator designated by the president to be responsible for implementing and enforcing the student conduct code.

(23) "Student group" means, for purposes of this code, a student organization, athletic team, or living group including, but not limited to, student clubs and organizations, members of a class or student cohort, student performance groups, and student living groups within student housing.

(24) "Student organization" means any number of students who have met the formal requirements of clubs and organizations.

AMENDATORY SECTION (Amending WSR 21-20-017, filed 9/23/21, effective 10/24/21)

WAC 132N-126-015 Statement of jurisdiction. (1) The student conduct code shall apply to student conduct that occurs:

(a) On college premises;

(b) At or in connection with college-sponsored activities; or

(c) Off-campus conduct that in the judgment of the college adversely affects the college community or the pursuit of its objectives.

(2) Jurisdiction extends to, but is not limited to, locations in which students or student groups are engaged in official college ac-

tivities including, but not limited to, foreign or domestic travel, activities funded by the associated students, athletic events, training internships, cooperative and distance education, online education, practicums, supervised work experiences or any other college-sanctioned social or club activities.

(3) Students are responsible for their conduct from notification of ~~((acceptance at))~~ admission to the college through the actual receipt of a certificate or degree, even though conduct may occur before classes begin or after classes end, as well as during the academic year and during periods between terms of actual enrollment.

(4) These standards shall apply to a student's conduct even if the student withdraws from college while a disciplinary matter is pending. The student conduct officer has sole discretion, on a case-by-case basis, to determine whether the student conduct code will be applied to conduct by students or student groups that occurs off campus.

AMENDATORY SECTION (Amending WSR 21-20-017, filed 9/23/21, effective 10/24/21)

WAC 132N-126-025 Prohibited student conduct. The college may impose disciplinary sanctions against a student who commits, attempts to commit, aids, abets, incites, encourages, or assists another person to commit, an act(s) of misconduct which include, but are not limited to, the following:

(1) **Academic dishonesty.** Any act of academic dishonesty including, but not limited to, cheating, plagiarism, and fabrication.

(a) Cheating: Includes any attempt to give or obtain unauthorized assistance relating to the completion of an academic assignment.

(b) Plagiarism includes taking and using as one's own, without proper attribution, the ideas, writings, or work of another person in completing an academic assignment. Prohibited conduct may also include the unauthorized submission for credit of academic work that has been submitted for credit in another course.

(c) Fabrication includes falsifying data, information, or citations in completing an academic assignment and also includes providing false or deceptive information to an instructor concerning the completion of an assignment.

(d) Academic consequences for academic dishonesty or abetting in academic dishonesty may be imposed at the discretion of a faculty member up to and including a failing grade for the course. Students should refer to each of their faculty's course syllabus and program handbook. Further academic consequences may follow consistent with the provisions in any program handbook including, but not limited to, dismissal from an academic program. Incidents of academic dishonesty may also be referred to the student conduct officer for disciplinary action consistent with this chapter in addition to the academic consequences identified above.

(2) **Other dishonesty.** Any other acts of dishonesty. Such acts include, but are not limited to:

(a) Forgery, alteration, submission of falsified documents or misuse of any college document, record, or instrument of identification;

(b) Tampering with an election conducted by or for college students; or

(c) Furnishing false information, or failing to furnish correct information, in response to the request or requirement of a college officer or employee.

(3) **Obstructive or disruptive conduct.** Conduct, not otherwise protected by law, that interferes with, impedes, or otherwise unreasonably hinders:

(a) Instruction, research, administration, disciplinary proceeding, or other college activities, including the obstruction of the free flow of pedestrian or vehicular movement on college property or at a college activity; or

(b) Any activity that is authorized to occur on college property, whether or not actually conducted or sponsored by the college.

(4) **Assault, intimidation, harassment.** Unwanted touching, physical abuse, verbal abuse, threat(s), intimidation, harassment, bullying, or other conduct which harms, threatens, or is reasonably perceived as threatening the health or safety of another person or another person's property. For purposes of this code, "bullying" is defined as repeated or aggressive unwanted behavior, not otherwise protected by law that intentionally humiliates, harms, or intimidates the victim.

(5) **Cyber misconduct.** Cyberstalking, cyberbullying or online harassment. Use of electronic communications including, but not limited to, electronic mail, instant messaging, electronic bulletin boards, and social media sites, to harass, abuse, bully or engage in other conduct which harms, threatens, or is reasonably perceived as threatening the health or safety of another person. Prohibited activities include, but are not limited to, unauthorized monitoring of another's email communications directly or through spyware, sending threatening emails, disrupting electronic communications with spam or by sending a computer virus, sending false messages to third parties using another's email identity, nonconsensual recording of sexual activity, and nonconsensual distribution of a recording of sexual activity.

(6) **Property violation.** Damage to, misappropriation of, unauthorized use or possession of, vandalism, or other nonaccidental damaging or destruction of college property or the property of another person. Property for purposes of this subsection includes computer passwords, access codes, identification cards, personal financial account numbers, other confidential personal information, intellectual property, and college trademarks.

(7) **Failure to comply with directive.** Failure to comply with the directive of a college officer or employee who is acting in the legitimate performance of his or her duties, including failure to properly identify oneself to such a person when requested to do so.

(8) **Weapons.** Possession, holding, wearing, transporting, storage or presence of any firearm, dagger, sword, knife or other cutting or stabbing instrument, club, explosive device, or any other weapon apparently capable of producing bodily harm is prohibited on the college campus, subject to the following exceptions:

(a) Commissioned law enforcement personnel or legally authorized military personnel while in performance of their duties;

(b) A student with a valid concealed weapons permit may store a pistol in his or her vehicle parked on campus in accordance with RCW 9.41.050 (2) or (3), provided the vehicle is locked and the weapon is concealed from view; or

(c) The president may grant permission to bring a weapon on campus upon a determination that the weapon is reasonably related to a legitimate pedagogical purpose. Such permission shall be in writing and shall be subject to such terms or conditions incorporated in the written permission.

This policy does not apply to the possession and/or use of disabling chemical sprays when possessed and/or used for self-defense.

(9) **Hazing.** (~~Hazing includes, but is not limited to, any initiation into a student organization or any pastime or amusement engaged in with respect to such an organization that causes, or is likely to cause, bodily danger or physical harm, or serious mental or emotional harm, to any student.~~)

(a) Hazing is any act committed as part of:

(i) A person's recruitment, initiation, pledging, admission into, or affiliation with a student group;

(ii) Any pastime or amusement engaged in with respect to such a student group;

(iii) That causes, or is likely to cause, bodily danger or physical harm, or serious psychological or emotional harm, to any student.

(b) Examples of hazing include, but are not limited to:

(i) Causing, directing, coercing, or forcing a person to consume any food, liquid, alcohol, drug, or other substance which subjects the person to risk of such harm;

(ii) Humiliation by ritual act;

(iii) Striking another person with an object or body part;

(iv) Causing someone to experience excessive fatigue, or physical and/or psychological shock; or

(v) Causing someone to engage in degrading or humiliating games or activities that create a risk of serious psychological, emotional, and/or physical harm.

(c) Hazing does not include customary athletic events or other similar contests or competitions.

(d) Consent is not a valid defense against hazing.

(10) **Alcohol, drug, and tobacco violations.**

(a) **Alcohol.** The use, possession, delivery, sale, or being observably under the influence of any alcoholic beverage, except as permitted by law and applicable college policies.

(b) **Marijuana.** The use, possession, delivery, or sale of marijuana or the psychoactive compounds found in marijuana intended for human consumption, regardless of form, or being observably under the influence of marijuana or the psychoactive compounds found in marijuana. While state law permits the recreational use of marijuana, federal law prohibits such use on college premises or in connection with college activities.

(c) **Drugs.** The use, possession, delivery, sale, or being observably under the influence of any legend drug, including anabolic steroids, androgens, or human growth hormones as defined in chapter 69.41 RCW, or any other controlled substance under chapter 69.50 RCW, except as prescribed for a student's use by a licensed practitioner.

(d) **Tobacco, electronic cigarettes and related products.** The use of tobacco, electronic cigarettes, and related products in any building owned, leased or operated by the college or in any location where such use is prohibited, including (~~twenty-five~~) 25 feet from entrances, exits, windows that open, and ventilation intakes of any building owned, leased or operated by the college. The use of tobacco, electronic cigarettes, and related products on the college campus is restricted to designated smoking areas. "Related products" include, but

are not limited to, cigarettes, pipes, bidi, clove cigarettes, water-pipes, hookahs, chewing tobacco, vaporizers, and snuff.

(11) **Lewd conduct.** Conduct which is lewd or obscene that is not otherwise protected under the law.

(12) **Discriminatory conduct.** Conduct which harms or adversely affects any member of the college community because of her/his race; color; national origin; sensory, mental or physical disability; use of a service animal; gender, including pregnancy; marital status; age; religion; creed; sexual orientation; gender identity; veteran's status; or any other legally protected classification.

(13) **Sexual misconduct.** The term "sexual misconduct" includes sexual harassment, sexual intimidation, and sexual violence. Sexual harassment prohibited by Title IX is defined in the supplemental procedures to this code. See WAC 132N-126-205 (discipline procedures for cases involving allegations of Title IX violations).

(a) **Sexual harassment.** The term "sexual harassment" means unwelcome sexual or gender-based conduct, including unwelcome sexual advances, requests for sexual favors, quid pro quo harassment, and other verbal, nonverbal, or physical conduct of a sexual or a gendered nature that is sufficiently severe, persistent, or pervasive as to:

(i) Deny or limit the ability of a student to participate in or benefit from the college's educational program;

(ii) Alter the terms or conditions of employment for a college employee(s); and/or

(iii) Create an intimidating, hostile, or offensive environment for other campus community members.

(b) **Sexual intimidation.** The term "sexual intimidation" incorporates the definition of "sexual harassment" and means threatening or emotionally distressing conduct based on sex including, but not limited to, nonconsensual recording of sexual activity or the distribution of such recording.

(c) **Sexual violence.** "Sexual violence" is a type of sexual discrimination and harassment. Nonconsensual sexual intercourse, nonconsensual sexual contact, domestic violence, dating violence, and stalking are all types of sexual violence.

(i) Nonconsensual sexual intercourse. Any actual or attempted sexual intercourse (anal, oral, or vaginal), however slight, with any object or body part, by a person upon another person, that is without consent and/or by force. Sexual intercourse includes anal or vaginal penetration by a penis, tongue, finger, or object, or oral copulation by mouth to genital contact or genital to mouth contact.

(ii) Nonconsensual sexual contact. Any actual or attempted sexual touching, however slight, with any body part or object, by a person upon another person that is without consent and/or by force. Sexual touching includes any bodily contact with the breasts, groin, mouth, or other bodily orifice of another individual, or any other bodily contact in a sexual manner.

(iii) Incest. Sexual intercourse or sexual contact with a person known to be related to them, either legitimately or illegitimately, as an ancestor, descendant, brother, or sister of either wholly or half related. Descendant includes stepchildren, and adopted children under the age of (~~eighteen~~) 18.

(iv) Statutory rape. Consensual intercourse between a person who is (~~eighteen~~) 18 years of age or older, and a person who is under the age of (~~sixteen~~) 16.

(v) Domestic violence. Physical violence, bodily injury, assault, the infliction of fear of imminent physical harm, sexual assault, or

stalking committed by a person with whom the victim shares a child in common, by a person who is cohabitating with or has cohabitated with the victim as a spouse, by a person similarly situated to a spouse of the victim under the domestic or family violence laws of the state of Washington, or by any other person against an adult or youth victim who is protected from that person's acts under the domestic or family violence laws of the state of Washington(~~(, RCW 26.50.010)~~).

(vi) Dating violence, physical violence, bodily injury, assault, the infliction of fear of imminent physical harm, sexual assault, or stalking committed by a person:

(A) Who is or has been in a social relationship of a romantic or intimate nature with the victim; and

(B) Where the existence of such a relationship shall be determined based on a consideration of the following factors:

(I) The length of the relationship;

(II) The type of relationship; and

(III) The frequency of interaction between the persons involved in the relationship.

(vii) Stalking. Engaging in a course of conduct directed at a specific person that would cause a reasonable person to:

(A) Fear for their safety or the safety of others; or

(B) Suffer substantial emotional distress.

(d) For purposes of this code, "consent" means knowing, voluntary, and clear permission by word or action, to engage in mutually agreed upon sexual activity. Each party has the responsibility to make certain that the other has consented before engaging in the activity. For consent to be valid, there must be at the time of the act of sexual intercourse or sexual contact actual words or conduct indicating freely given agreement to have sexual intercourse or sexual contact. A person cannot consent if they are unable to understand what is happening or are disoriented, helpless, asleep, or unconscious for any reason, including due to alcohol or other drugs. An individual who engages in sexual activity when the individual knows, or should know, that the other person is physically or mentally incapacitated has engaged in nonconsensual conduct. Intoxication is not a defense against allegations that an individual has engaged in nonconsensual sexual conduct.

(14) **Harassment.** Unwelcome and offensive conduct, including verbal, nonverbal, or physical conduct, that is directed at a person because of such person's protected status and that is sufficiently serious as to deny or limit, and that does deny or limit, the ability of a student to participate in or benefit from the college's educational program, that changes the terms or conditions of employment for a college employee, or that creates an intimidating, hostile, or offensive environment for other campus community members. Protected status includes a person's race; color; national origin; sensory, mental or physical disability; use of a service animal; gender, including pregnancy; marital status; age; religion; creed; sexual orientation; gender identity; veteran's status; or any other legally protected classification. See "sexual misconduct" for the definition of "sexual harassment." Harassing conduct may include, but is not limited to, physical conduct, verbal, written, social media, and electronic communications.

(15) **Retaliation.** Harming, threatening, intimidating, coercing, or taking adverse action of any kind against a person because such person reported an alleged violation of this code or college policy, provided information about an alleged violation, or participated as a

witness or in any other capacity in a college investigation or disciplinary proceeding.

(16) **Misuse of electronic resources.** Theft or other misuse of computer time or other electronic information resources of the college. Such misuse includes, but is not limited to:

(a) Unauthorized use of such resources or opening of a file, message, or other item;

(b) Unauthorized duplication, transfer, or distribution of a computer program, file, message, or other item;

(c) Unauthorized use or distribution of someone else's password or other identification;

(d) Use of such time or resources to interfere with someone else's work;

(e) Use of such time or resources to send, display, or print an obscene or abusive message, text, or image;

(f) Use of such time or resources to interfere with normal operation of the college's computing system or other electronic information resources;

(g) Use of such time or resources in violation of applicable copyright or other law;

(h) Adding to or otherwise altering the infrastructure of the college's electronic information resources without authorization; or

(i) Failure to comply with the college's electronic use policy.

(17) **Unauthorized access.** Unauthorized possession, duplication, or other use of a key, keycard, or other restricted means of access to college property, or unauthorized entry onto or into college property.

(18) **Safety violations.** Nonaccidental conduct that interferes with or otherwise compromises any college policy, equipment, or procedure relating to the safety and security of the campus community, including tampering with fire safety equipment and triggering false alarms or other emergency response systems.

(19) **Violation of other laws or policies.** Violation of any federal, state, or local law, rule, or regulation or other college rules or policies, including college traffic and parking rules.

(20) **Ethical violation.** The breach of any generally recognized and published code of ethics or standards of professional practice that governs the conduct of a particular profession for which the student is taking a course or is pursuing as an educational goal or major.

In addition to initiating discipline proceedings for violation of the student conduct code, the college may refer any violations of federal, state, or local laws to civil and criminal authorities for disposition. The college reserves the right to pursue student disciplinary proceedings regardless of whether the underlying conduct is subject to civil or criminal prosecution.

NEW SECTION

WAC 132N-126-036 Hazing prohibited—Sanctions. (1) Hazing by a student or a student group is prohibited pursuant to WAC 132N-126-025(9).

(2) No student may conspire to engage in hazing or participate in hazing of another. Washington state law provides that hazing is a criminal offense, punishable as a misdemeanor.

(3) Washington state law provides that:

(a) Any student group that knowingly permits hazing is strictly liable for harm caused to persons or property resulting from hazing. If the organization, association, or student living group is a corporation, whether for-profit or nonprofit, the individual directors of the corporation may be held individually liable for damages.

(b) Any person who participates in the hazing of another shall forfeit any entitlement to state-funded grants, scholarships, or awards for a period of time determined by the college.

(c) Student groups that knowingly permit hazing to be conducted by its members or by others subject to its direction or control shall be deprived of any official recognition or approval granted by the college.

(d) Student groups found responsible for violating the code of student conduct, college antihazing policies, or state or federal laws relating to hazing or offenses related to alcohol, drugs, sexual assault, or physical assault will be disclosed in a public report issued by the college setting forth the name of the student group, the date the investigation began, the date the investigation ended, a finding of responsibility, a description of the incident(s) giving rise to the finding, and the details of the sanction(s) imposed.

Clark College - Budget Status Report September 30, 2025

Sources of Funds (Revenues)	2025-26 Budget	Revenues to Date	Difference	% Budget Received
<u>Operating Accounts</u>				
State Allocation	54,259,724	9,717,791	(44,541,933)	17.9%
Tuition & ABE	17,552,565	8,058,757	(9,493,808)	45.9%
Running Start	15,302,507	660,054	(14,642,453)	4.3%
Planned use of prior fund balance	-	-	-	0.0%
Dedicated, matriculation, tech, cont ed	5,337,406	2,437,395	(2,900,011)	45.7%
Total Operating Accounts	92,452,202	20,873,998	(71,578,204)	22.6%
<u>Other Accounts</u>				
Grants	4,638,562	816,223	(3,822,339)	17.6%
Contracts	2,219,342	71,995	(2,147,347)	3.2%
Internal Support & Agency Funds	1,106,142	71,869	(1,034,273)	6.5%
ASCC	2,570,377	810,181	(1,760,196)	31.5%
Bookstore	2,802,217	1,083,097	(1,719,120)	38.7%
Parking	324,180	135,703	(188,477)	41.9%
Auxilliary Services	2,417,142	1,376,859	(1,040,283)	57.0%
Financial Aid	31,772,162	5,803,511	(25,968,651)	18.3%
Total Other Accounts	47,850,124	10,169,438	(37,680,686)	21.3%
Total Sources of Funds	140,302,326	31,043,435	(109,258,891)	22.1%

Uses of Funds (Expenses)	2025-26 Budget	Encumbrances Expenditures to Date	Difference	% Budget Spent
<u>Operating Accounts</u>				
President	1,395,669	385,425	1,010,244	27.6%
Vice President of Diversity, Equity & Inclusion	986,918	209,079	777,839	21.2%
Vice President of Instruction	59,614,866	10,962,594	48,652,272	18.4%
Vice President of Operations	12,375,886	3,927,666	8,448,220	31.7%
Vice President of Student Affairs	10,672,559	2,665,155	8,007,404	25.0%
Chief Information Officer	5,307,927	1,525,398	3,782,529	28.7%
Vice President of Human Resources and Compliance	2,098,377	745,436	1,352,941	35.5%
Bank fees/cc fees/revolving funds	-	37,045	(37,045)	0.0%
Total Operating Accounts	92,452,202	20,457,798	71,994,404	22.1%
<u>Other Accounts</u>				
Grants	4,638,562	863,244	3,775,318	18.6%
Contracts less Running Start	2,219,342	1,472,479	746,863	66.3%
Internal Support & Agency Funds	1,106,142	395,475	710,667	35.8%
ASCC	2,570,377	893,090	1,677,287	34.7%
Bookstore	2,802,217	1,661,494	1,140,723	59.3%
Parking	324,180	59,468	264,712	18.3%
Auxilliary Services	2,417,142	796,180	1,620,962	32.9%
Financial Aid	31,772,162	10,327,524	21,444,638	32.5%
Total Other Accounts	47,850,124	16,468,954	31,381,170	34.4%
Total Uses of Funds	140,302,326	36,926,752	103,375,574	26.3%
Difference - Excess (Deficiency)	-	(5,883,317)		

c. Dr. Karin Edwards, Sabra Sand, Vanessa Neal, Nicole Rogers-Marcum, Julie Taylor, Terry Brown
e. Mark Wahlers, Sudha Frederick, Darcy Rourk, Ash Kingsland, Darci Feider, Tanya Kerr
Sandy Foster 9/11/2025



Financial Dashboard - September 30, 2025

Contributions/Donations Received

1973 - Present

	Year to Date	6/30/2025	6/30/2024	6/30/2023	Life to date
Unrestricted	\$ 47,571	\$ 1,371,770	\$ 646,338	\$ 434,388	
Temp. Restricted	405,996	1,617,778	1,672,093	1,198,387	
Perm. Restricted	49,940	351,391	400,138	679,338	
Total	\$ 503,507	\$ 3,340,939	\$ 2,718,569	\$ 2,312,113	\$ 120,321,840

Year to date		6/30/2025		6/30/2024		6/30/2023		1973 - Present	
Unrestricted	Temp Restricted	Unrestricted	Temp Restricted	Unrestricted	Temp Restricted	Unrestricted	Temp Restricted	Life to date	

College Support Expended

Program	\$ 89,355	52,614	\$ 1,778,699	\$ 1,513,251	\$ 1,149,848	\$ 1,891,220	\$ 1,156,991	\$ 1,743,837	\$ 55,337,949
Student assistance & admin supp.	9,584	\$ 134,311	316,064	1,603,518	34,594	1,665,955	8,513	1,255,884	20,840,081
Capital projects-NC/STEM/Dent. Hyg./Oth.	-	-	-	-	-	-	-	-	15,612,791
Boschma Farms land acquisition	-	-	-	-	-	-	-	-	4,306,786
Total	\$ 98,939	\$ 186,925	\$ 2,094,763	\$ 3,116,769	\$ 1,184,442	\$ 3,557,175	\$ 1,165,504	\$ 2,999,721	\$ 96,097,607

Student financial assistance

	FY 22	FY 23	FY 24	FY 25	YTD
Number of students receiving awards	550	535	599	673	555
Clark College Students (Fall excl. Running Start)	5,983	5,537	6,643	7,006	7,236

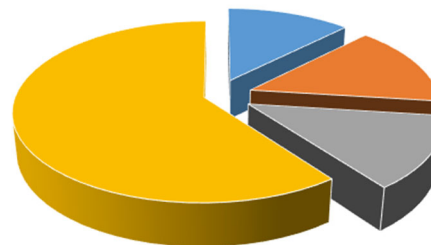
Cost of tuition (2025-2026).
12 credits for 3 qtrs. = \$4,545.

Lower division courses. WA resident. Excludes books or class fees.

Net Assets by Type

Unrestricted	\$ 15,245,708
Board Restricted	17,984,617
Temporarily Restricted	17,711,096
Permanently Restricted	77,236,705
Net Assets	\$ 128,178,126

Net Assets by Type



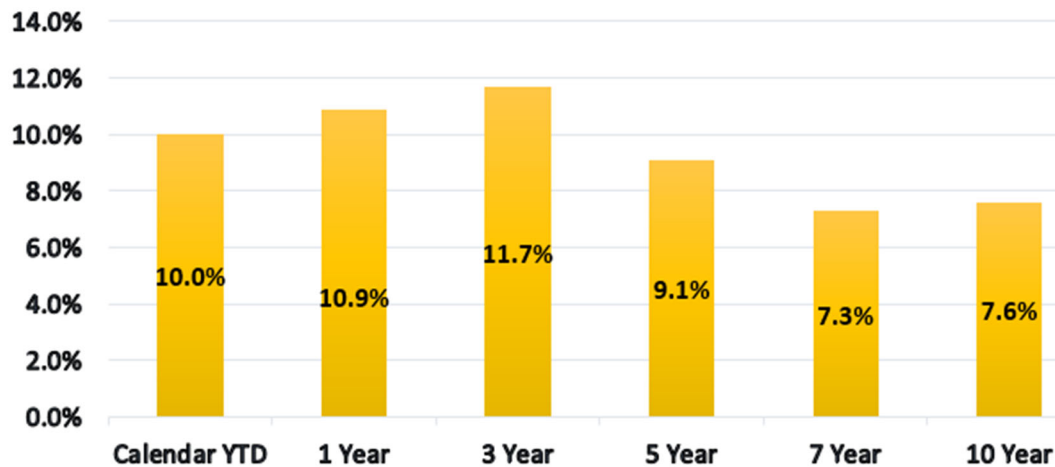
- Unrestricted
- Board Restricted
- Temporarily Restricted
- Permanently Restricted

Unrestricted Net Assets	Year to date	6/30/2025	6/30/2024	6/30/2023	6/30/2022
Assets					
Cash	\$ 195,745	\$ 266,399	\$ 10,809	\$ 322,468	\$ 169,678
Investments/Assets in Trust	4,090,076	5,240,614	5,613,488	5,413,192	6,237,164
Receivables	799,954	802,415	178,411	171,564	178,201
Prepays/Deposits/Other Assets	134,953	165,987	299,348	216,314	241,305
Land/building/equipment	10,378,722	10,377,331	10,373,429	10,392,477	10,364,804
Liabilities					
A/P/Other Liabilities	(353,742)	(1,449,618)	(1,263,281)	(1,110,944)	(1,035,748)
Note Payable	-	-	-	-	-
	<u>\$ 15,245,708</u>	<u>\$ 15,403,128</u>	<u>\$ 15,212,204</u>	<u>\$ 15,405,071</u>	<u>\$ 16,155,404</u>

Projected - Liquid Unrestricted Net Assets Available	
6/30/2026	385,000
6/30/2027	365,000
6/30/2028	345,000
6/30/2029	325,000
6/30/2030	305,000

*Excludes operational reserve of \$1,300,000.

Investment Pool Returns



Endowment

Distribution Details

	FY 22	FY 23	FY 24	FY 25	FY 26
College Program	\$ 1,409,123	\$ 1,644,434	\$ 1,758,440	\$ 1,563,852	\$ 1,554,432
Unrestricted	2,462,113	2,660,664	2,704,186	3,140,997	3,088,031
College Program Reserves	73,002	165,992	138,066	57,189	50,742
	<u>\$ 3,944,238</u>	<u>\$ 4,471,090</u>	<u>\$ 4,600,692</u>	<u>\$ 4,762,038</u>	<u>\$ 4,693,205</u>



BALANCE SHEET (STATEMENT OF FINANCIAL POSITION)

For the Period Ended:

		<u>September 30, 2025</u>	<u>June 30, 2025</u>	<u>September 30, 2024</u>
ASSETS				
Cash	A	\$ 195,745	\$ 266,399	\$ 81,612
Investments	B	112,038,942	107,659,651	105,943,880
Assets Held in Trust		5,529,813	5,477,007	5,930,687
Receivables	C	1,624,939	2,000,629	1,276,868
Other Assets		134,953	165,987	284,442
Fixed Assets		10,378,722	10,377,331	10,382,366
TOTAL ASSETS		<u>\$ 129,903,114</u>	<u>\$ 125,947,003</u>	<u>\$ 123,899,855</u>
LIABILITIES & FUND BALANCES				
LIABILITIES				
Current Liabilities	A	\$ 296,918	\$ 1,497,673	\$ 803,943
Liabilities-Assets Held in Trust		1,428,070	1,465,653	1,617,393
TOTAL LIABILITIES		<u>\$ 1,724,988</u>	<u>\$ 2,963,327</u>	<u>\$ 2,421,336</u>
NET ASSETS				
Unrestricted Fund Balance	D	\$ 33,230,325	\$ 32,759,851	\$ 32,774,526
Temporarily Restricted Fund Balance	D	17,711,096	16,869,454	15,606,772
Permanently Restricted Fund Balance	D	77,236,705	73,354,371	73,097,221
NET ASSETS		<u>\$ 128,178,126</u>	<u>\$ 122,983,676</u>	<u>\$ 121,478,519</u>
TOTAL LIABILITIES & FUND BALANCES		<u>\$ 129,903,114</u>	<u>\$ 125,947,003</u>	<u>\$ 123,899,855</u>



BALANCE SHEET (STATEMENT OF FINANCIAL POSITION)

For the Period Ended: September 30, 2025

Explanation of Variances

- A Changes reflect the timing of cash receipts and disbursements. Variations occur as donations are received, invoices are processed, and checks are issued, resulting in differing month-end balances of Cash and Current Liabilities.
- B The investment balance reflects inflows (donations), outflows (college support and foundation expenses), and cumulative realized and unrealized gains/losses. The investment pool recorded a 10.9% gain for the previous 12 months. Additional performance measures are available in the financial dashboard.
- C Change in Receivables a result of new pledges and known estate gifts. From September 2024 through June 2025, new receivables were recorded from Murdock Trust (\$350,000) and a donor's estate (\$734,000). During that period a pledge payment of \$500,000 was received from McClaskey Foundation for the culinary remodel. From June 2025 through September 2025, the Murdock \$350,000 pledge payment was received. These gifts plus other smaller gifts represent the changes in Receivables from the periods shown.
- D Changes in Net Assets based on net income (loss) for the periods presented. See income statement for review of revenue/expenses.



INCOME STATEMENT (STATEMENT OF ACTIVITIES)

		For the Three Months Ending September 30, 2025				September 30, 2024
		Unrestricted	Temp Restricted	Perm Restricted	Total	Total
REVENUE (Excluding Investments)						
Cash Donations (Including Scholarships)	A	\$ 39,188	\$ 405,996	\$ 49,940	\$ 495,124	\$ 679,180
In-Kind Donations		8,383	-	-	8,383	218
Income - Sponsorships & Fundraising		5,000	7,070	-	12,070	14,428
Income - Operations	B	17,506	-	-	17,506	47,719
Total REVENUE (Excluding Investments)		\$ 70,077	\$ 413,066	\$ 49,940	\$ 533,083	\$ 741,544
EXPENSES (UNRESTRICTED)						
Wages/Benefits/PR Taxes	C	\$ 617,927	\$ -	\$ -	\$ 617,927	\$ 569,922
College Capital & Program Support	D	89,355	-	-	89,355	36,451
Professional & Service Provider Fees		82,789	-	-	82,789	73,990
Software/Support & Website		33,104	-	-	33,104	32,045
Catering/Meetings	E	26,911	-	-	26,911	15,743
Travel/Lodging		25,721	-	-	25,721	21,358
Printing/Copying		20,514	-	-	20,514	21,004
Insurance		14,612	-	-	14,612	13,640
Operating Agreement/In Kind Expense		14,521	-	-	14,521	14,521
Occupancy (Utilities & Maint & Repair)		8,430	-	-	8,430	9,125
Advertising/Awards/Prizes		6,954	-	-	6,954	3,626
Taxes/Licenses/Registrations		5,980	-	-	5,980	5,577
Staff Development		5,709	-	-	5,709	4,867
Student Financial Assistance		5,283	-	-	5,283	-
Scholarship Management/Support	F	4,300	-	-	4,300	18,946
Postage		3,749	-	-	3,749	2,049
Supplies/Recruit/Misc./Transfers		3,442	-	-	3,442	3,707
Publications/Dues		1,661	-	-	1,661	2,232
Entrance Fees/Rentals		790	-	-	790	-
Thank/Honor/Remember		584	-	-	584	2,895
Transfers		848	-	-	848	-

	For the Three Months Ending September 30, 2025				September 30, 2024
	Unrestricted	Temp Restricted	Perm Restricted	Total	Total
Depreciation	8,006	-	-	8,006	6,574
Total EXPENSES (UNRESTRICTED)	\$ 981,191	\$ -	\$ -	\$ 981,191	\$ 858,271
EXPENSES (RESTRICTED)					
Student Financial Assistance	G \$ -	\$ 134,311	\$ -	\$ 134,311	\$ 498,055
Stipends/Fees/Temp Services	G -	15,188	-	15,188	63,639
Supplies	G -	13,435	-	13,435	113,410
Professional & Service Provider Fees	-	10,662	-	10,662	3,407
Catering/Meetings	-	10,061	-	10,061	7,076
Advertising/Awards/Prizes	G -	2,049	-	2,049	26,030
Taxes/Licenses/Registrations	-	898	-	898	296
Publications/Dues	-	715	-	715	6,490
Travel/Lodging	G -	263	-	263	19,471
Entrance Fees/Green Fees/Rentals	-	190	-	190	1,165
Staff Development	G -	-	-	-	17,594
Thank/Honor/Remember	-	-	-	-	4,061
Printing/Copying	-	-	-	-	544
Occupancy (Utilities & Maint & Repair)	-	-	-	-	198
Postage	-	-	-	-	43
Transfer	-	(848)	-	(848)	-
Total EXPENSES (RESTRICTED)	\$ -	\$ 186,925	\$ -	\$ 186,925	\$ 761,479
Total EXPENSES	\$ 981,191	\$ 186,925	\$ -	\$ 1,168,116	\$ 1,619,750
NET INCOME (LOSS) Excl Investments	\$ (911,114)	\$ 226,141	\$ 49,940	\$ (635,033)	\$ (878,206)
INVESTMENT INCOME (LOSS)					
Interest/Dividends	H \$ 129,231	\$ 79,951	\$ 257,623	\$ 466,806	\$ 447,828
Realized Investment Income (Loss)	H (11,342)	(6,074)	(20,437)	(37,854)	1,373,993
Unrealized Investment Income (Loss)	H 1,263,699	541,625	3,585,405	5,390,728	2,983,138
Change in Value-Split Interests	-	-	9,804	9,804	10,147
Total INVESTMENT INCOME (LOSS)	\$ 1,381,587	\$ 615,502	\$ 3,832,394	\$ 5,829,483	\$ 4,815,105
NET INCOME (LOSS)	\$ 470,474	\$ 841,643	\$ 3,882,334	\$ 5,194,450	\$ 3,936,899



INCOME STATEMENT
(STATEMENT OF ACTIVITIES)
For the Three Months Ending September 30, 2025

Explanation of Variances

- A Donations decreased \$184,000 over the same period last year. Cultivation efforts are underway with significant gift and grant proposals being reviewed by potential donors.
- B Income-Operations declined from the prior year due to a \$30,000 refund of consulting fees that had been reserved and expensed in the previous fiscal year.
- C Wages/Benefits/PR Taxes increased as anticipated due to cost-of-living and market adjustments, higher medical and dental insurance premiums, and vacation payouts for departing employees.
- D College Capital & Program Support increased \$53,000, primarily due to the Arts@Clark initiative. The initiative funds visiting artists and showcases Clark's talent.
- E Increase in Catering/Meetings primarily due to the dinner boat cruise for the annual board retreat held in September 2025. A similar activity was not held in the prior year.
- F Scholarship Management/Support decreased from the prior year due to costs incurred for the Scholarship Reception/Gala in fiscal year 2025.
- G Due to staffing shortages in the College's Business Office, the August and September bill has not yet been received. As a result, College expenses are under budget compared to the prior year, when no such delay occurred.
- H Investment income reflects year to date cumulative realized and unrealized gains/losses. The investment pool recorded a 10.9% gain for the previous 12 months. Additional performance measures are available in the financial dashboard.

General item: The income statement reflects all financial activities of the foundation, including operational expenses and college expenditures for programs, scholarships and capital projects.



Clark College Foundation
OPERATIONAL BUDGET COMPARISON
 For Three Months Ending: September 30, 2025

		YTD Actual Thru 09/30/2025	Budget to Date Thru 09/30/2025	YTD Variance	% Variance
INCOME					
Endowment Distributions (Unrestricted)	A	\$ 772,008	\$ 772,008	\$ -	0.0%
Unrestricted Fundraising	B	16,078	157,500	(141,422)	-89.8%
Administrative Fee Income	B	23,111	50,000	(26,889)	-53.8%
Sponsorship Revenue		5,000	12,500	(7,500)	-60.0%
Trustee Fee Income		2,985	3,000	(15)	-0.5%
Ticket Sales Revenue		-	1,625	(1,625)	-100.0%
		\$ 819,181	\$ 996,633	\$ (177,452)	-17.8%
OPERATIONAL EXPENSES					
Salaries, Wages & Benefits		\$ 617,927	\$ 607,335	\$ (10,592)	-1.7%
Advancement					
Software/Publications/Dues		\$ 26,942	\$ 26,709	\$ (233)	-0.9%
Professional Fees/Service Provider Fees		11,879	16,451	4,572	27.8%
Printing/Copying		8,741	2,338	(6,404)	-273.9%
Travel/Lodging		6,502	5,219	(1,283)	-24.6%
Staff Development		3,340	4,888	1,548	31.7%
Catering/Meetings		2,896	4,346	1,450	33.4%
Postage		1,764	675	(1,089)	-161.3%
Supplies/Misc.		679	3,703	3,024	81.7%
Advertising/ Awards/Prizes/Special Campaign		250	713	463	64.9%
Thank/Honor/Remember		40	975	935	95.9%
		\$ 63,032	\$ 66,014	\$ 2,982	4.5%
External Relations					
Service Provider Fees		\$ 17,409	\$ 22,653	\$ 5,244	23.1%
Printing/Copying		9,712	15,500	5,788	37.3%
Advertising/ Awards/Prizes		6,704	13,625	6,921	50.8%

	YTD Actual	Budget to Date	YTD	%
	Thru 09/30/2025	Thru 09/30/2025	Variance	Variance
Postage	1,985	4,750	2,765	58.2%
Software/Publications/Dues	444	2,310	1,866	80.8%
Catering/Meetings	C 393	15,251	14,858	97.4%
Thank/Honor/Remember	308	1,375	1,067	77.6%
Supplies/Misc.	190	3,025	2,835	93.7%
Travel/Lodging	54	3,300	3,246	98.4%
Staff Development	-	2,000	2,000	100.0%
	\$ 37,199	\$ 83,789	\$ 46,590	55.6%
Administration				
Professional Fees	\$ 38,025	\$ 31,811	\$ (6,214)	-19.5%
Catering/Meetings	23,623	30,602	6,979	23%
Serv. Prov. Fees/Publications/Dues	23,921	16,242	(7,678)	-47.3%
Insurance	8,917	9,054	137	1.5%
Software & Support	7,210	6,865	(345)	-5.0%
Occupancy	6,135	9,078	2,943	32.4%
Supplies/Postage/Recruiting	3,598	8,830	5,232	59.3%
Printing/Copying/Graphics	2,061	2,057	(5)	-0.2%
Travel & Lodging	19,165	19,537	372	1.9%
Staff Development & Continue Ed	2,369	1,946	(423)	-21.7%
	\$ 135,024	\$ 136,022	\$ 998	0.7%
TOTAL OPERATIONAL EXPENSES	\$ 853,182	\$ 893,159	\$ 39,977	4.5%
NET INCOME BEFORE COLLEGE EXPENSES	\$ (34,001)	\$ 103,474	\$ (137,475)	-132.9%
COLLEGE PROGRAM EXPENSES				
College Allocation	D \$ 25,062	\$ 50,000	\$ 24,938	49.9%
College/Foundation Annual Event	534	736	202	27.5%
Scholarship Management	4,300	5,000	700	14.0%
	\$ 29,896	\$ 55,736	\$ 25,840	46.4%
NET INCOME (EXPENSE)	\$ (63,897)	\$ 47,738	\$ (111,635)	233.9%



Clark College Foundation
OPERATIONAL BUDGET COMPARISON
For Three Months Ending: September 30, 2025

Explanation of Variances

- A** Represents funds distributed from endowment investments for the 2025/2026 operational budget.
- B** The budget included \$157,500 in unrestricted fundraising revenue and \$50,000 in gift fee revenue. To date, \$16,000 and \$23,000 have been recorded, respectively. An unrestricted gift of \$250,000 is expected in October 2025, as communicated by the donor.
- C** Catering/Meetings expenses are lower than budgeted due to timing but expected to increase through the remainder of the year.
- D** College expenses are lower than budgeted due to delay of the college bills but expected to increase through the remainder of the year.

General item: The operational budget reflects expenses funded exclusively from unrestricted resources designated for Foundation operations and College related expenditures.